



RAILWORKS

QUICKSTART GUIDE

Contents

Introduction	4
1 Installing RailWorks	5
1.1 System Requirements	5
Minimum Requirements	5
Recommended Specifications	5
1.2 Installation	5
1.3 Changing the Game Settings	6
2 Getting Started	7
2.1 Simple Driving Controls	7
2.2 Changing Your Point of View	8
2.3 Other Useful Controls	8
2.4 Quitting RailWorks	9
2.5 Learning More	9
3 Overview of Screens and Menus	10
3.1 Opening Screen	10
3.2 Routes Screen	12
3.3 Scenario Screen	13
3.4 Introduction to Commands While Driving	13
3.4.1 Driver's Guide	14
3.4.2 Display Names	14
3.4.3 Speed Overlays	14
3.4.4 2D Map	14
4 Free Roam Driving	15
5 Running a Scenario	16
5.1 Saving your Scenario	18
5.2 Resuming Your Scenario	18
6 More Information, Support and Troubleshooting	19
6.1 Warning and Error Messages	19
6.2 General Troubleshooting Tips	19
6.3 Problems Running the Game	20
7 Credits	22



Introduction

Rail Simulator 2: RailWorks is Steam powered

When you install Rail Simulator 2: RailWorks you will need to authenticate your copy of the game by registering it online with the free Steam gaming service. You only need to connect to the internet once to do this and the installer will take you through the process when you put the RailWorks disc in your drive. If you don't already have a free Steam account, you will need to create one, and this will give you access to some amazing new features:

- Find and chat with your friends while gaming
- Receive automatic game updates
- Earn achievements and join up with the rest of the Steam community.

For more information, please visit www.railsimulator.com/steam.

01

Installing Railworks

1.1 System Requirements

Minimum Requirements

- OS** Windows XP with latest service pack installed / Windows Vista / Windows 7
- CPU** XP - Intel Pentium 4 / AMD Athlon 1.7 GHz or equivalent Vista or Windows 7 - Intel Pentium 4 / AMD Athlon 2.6 GHz or equivalent
- RAM** 512 MB
- GFX** 64MB DirectX 9.0c compliant video card supporting Pixel Shader 2.0 or above
- SFX** DirectX 9.0c compatible
- HDD** 4.5 GB of space is required to install the game

Recommended Specifications

- OS** Windows XP with latest service pack installed / Windows Vista / Windows 7
- CPU** Intel Pentium 4 / AMD Athlon 3.0 GHz or equivalent
- RAM** 1.0GB
- GFX** 256MB DirectX 9.0c compliant video card, supporting Pixel Shader 3.0
- SFX** Sound Blaster® X-Fi™ series from Creative Labs
- HDD** 4.5 GB of space is required to install the game

1.2 Installation

Always follow the installation instructions presented on screen as they will be up to date. The instructions below are for guidance only. To install RailWorks on your PC:

1. You must be connected to the internet.
2. Insert the RailWorks Disc into your disc drive.
This opens an Installation wizard and will be a familiar process if you have installed other software before.
If the process does not start automatically:



1. Click **START** on the taskbar
 2. Click **MY COMPUTER**
 3. Double click on the appropriate DVD-ROM drive
 4. Double click on the **setup.exe** icon
3. Steam will be installed first. It will update itself at various points.
 4. You must choose whether to create a new Steam account or use an existing one. Enter the required information and **write down or print** the STEAM ACCOUNT INFORMATION.
 5. *Enter your 25-character game serial number when requested by the wizard.*
 6. RailWorks will be installed from the DVD then updated from the internet.

After the game has installed, you will see a RailWorks icon on your desktop. Click on this to start running the game. Alternatively you can start RailWorks from your **Start** menu.

The installation process optimises the software performance according to your computer's specification. However, you can modify these settings when you load the game, by selecting the **Settings** button. This is discussed further in **Changing the Game Settings**.

1.3 Changing the Game Settings

You can change your graphical, sound and gameplay options before entering the game, or before selecting a route. To change your game options, click on the **Settings** button in the initial screen as you load RailWorks.

This opens a dialog window where you can specify the resolution of the game, toggle full screen mode on and off, and other advanced graphics and audio settings.

By default the game is set to run in full screen. Uncheck the **Full Screen** option to run in windowed mode.

Other than changing whether RailWorks runs in full screen or windowed mode, it is usually not necessary to change the game options, as they have been optimised for your computer during the installation process.

02

Getting Started

RailWorks offers you a highly realistic train driving experience: if you have never driven a train before, it takes some practice to master all the techniques. However, with these simple instructions you can start driving straight away:

1. Click on your RailWorks icon to start the game. You also must have the disc in your disc drive.
2. At the first screen, click the **Play Game...** button.
3. You will then see the Home page screen. Click on the **Routes** link.
4. You will then see the Routes screen. Select a route from the list in the centre of the screen.
5. Select **Free Play** and wait for the route to load.
6. Once the route is loaded, use the left mouse button to select the train you want to drive.
7. Press the **<A>** key to begin driving your train.

2.1 Simple Driving Controls

By default, RailWorks has driving controls set to 'Simple'. This means that the software is doing most of the driving work for you. The following simple keyboard controls are all you need to start driving your train:

- A** - Increase throttle or open the regulator (accelerate)
- D** - Increase (apply) brake
- S** - Reverse direction of travel. You must be at a complete stop to do this.



Backspace - Apply emergency brakes. This sets the brakes to 100% and locks the other controls. Once the train has come to a complete stop, the other controls will unlock.

Spacebar - Sound the horn or whistle

You can also use the mouse to manipulate the controls on the screen:

1. Click the **<1>** key to change to a view of the interior of the train cab (or footplate in a steam locomotive).
2. Left-click on the control (throttle or brake), and, holding down the left mouse button, drag the control in the direction you wish to manipulate it.

In Simple Driving mode, you can only use the Brake and Throttle controls, but in more advanced driving levels, you can use all the controls in the cab.

2.2 Changing Your Point of View

Initially, the camera is positioned outside and above the train (the external camera). Use the following number keys to change cameras as you drive:

- 1 Switch to Cab view
- 2 Switch to External Camera (the initial view)
- 3 Switch to rear of train
- 4 Trackside camera
- 5 Passenger view
- 6 Front coupling camera
- 7 Overhead Yard camera
- 8 Detach camera from train for general exploration

You can change your viewing angle (the direction of the camera) using the **Arrow** keys.

2.3 Other Useful Controls

The Function keys on your keyboard will bring up technical information windows about your route. The most useful of these when starting out is the **<F4>** key, which gives you simple information about your train in an easy-to-read format.

For a complete list of keyboard controls, see the Keyboard Controls Guide supplied with your game.

2.4 Quitting RailWorks

To quit your route and exit RailWorks:

1. Move your mouse to the bottom edge of your screen. The Main menu will pop up.
2. Click on the leftmost icon (or footplate if driving a steam locomotive) to return to the Home screen.
3. Click on the **Close** button at the top right of the screen, and confirm.

Alternatively, you can press **<Ctrl-Q>** at any time to return to the Home screen.

If you derail the train, cause it to crash with another train, or otherwise cause an engine failure through driver error, the game will automatically end and return you to the Home screen.

2.5 Learning more

Now you have had an experience of driving a train, here's how to learn more:

I want to...

Learn more about menus and controls

Learn more about Free Play driving

Learn more about Scenarios

Learn advanced driving techniques

Learn more about routes and scenarios

Create my own Scenario

Create a new Route

Go to

Go to the Menu Overview section in this Guide or look over the Keyboard Controls Guide supplied with your game.

Go to the Free Roam Driving section in this Guide.

Go to the Scenario section in this Guide.

See the Driver Manual supplied with your game

See the Driver Manual supplied with your game

See the Creator Manual supplied with your game.

See the Creator Manual supplied with your game.



03

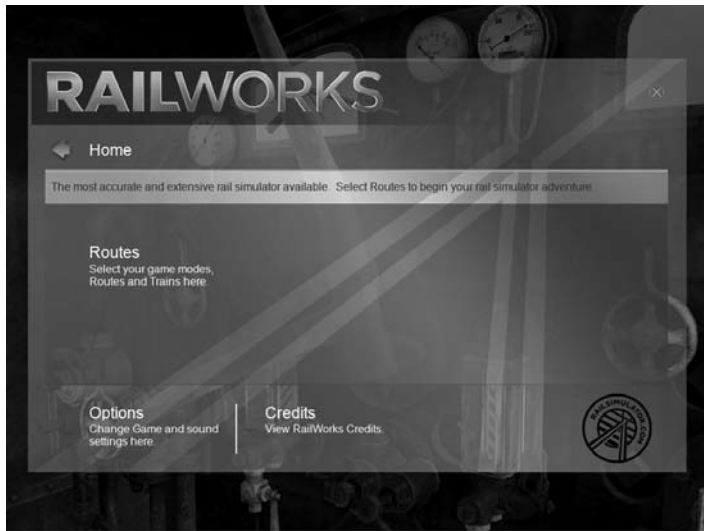
Overview of Screen and Menus

3.1 Opening Screen

The opening screen launches the game, and also offers you the chance to change game options, using the **Options** button.

For more information on this see **Changing the Game Options**.

Once the game is launched, you see the Home screen.



The Home screen is your doorway into the RailWorks, and has three options:

- Routes** Click here to get to the Routes screen.
- Options** Click here to change Game and sound settings. To change driver settings to more advanced options, use this link.
- Credits** Click here to view everyone who helped create RailWorks.

The Options menu has four options:

Graphical Detail Use this to change or adjust details of the visual graphics. This default setting here has been optimised based on your computer's settings.

Advanced Options Use this to adjust the brightness of the display.

Sound Options Use this to adjust the Master and Ambient volume of your audio settings.

Gameplay Options Use this to manage your game controls.

The Gameplay Options are as follows:

Control Model Select Simple (minimal controls and simulation), Intermediate, or Advanced (full controls and simulation) to set the driving skill level.

Automatic Fireman Enable this to automatically transfer coal and water to the engine when levels get low.

User Hints Turn this on to allow tool tips for cab controls when in cab view.

Automatic Coupling Enable this to couple without the need for a keypress whenever you bump into rolling stock at low speed.

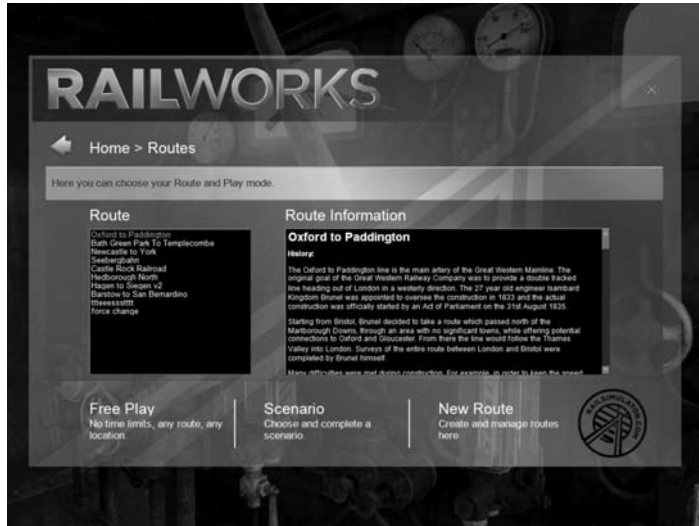
Train Jumping Alerts Turn this on to see dialogue boxes warning you of nearby trains you can jump into during Free Roam play.

Coupling Override Enable this to allow rolling stock of incompatible coupling types to couple.



3.2 Routes Screen

The Routes Screen allows you to select routes, read descriptions of routes, and select your mode of play.



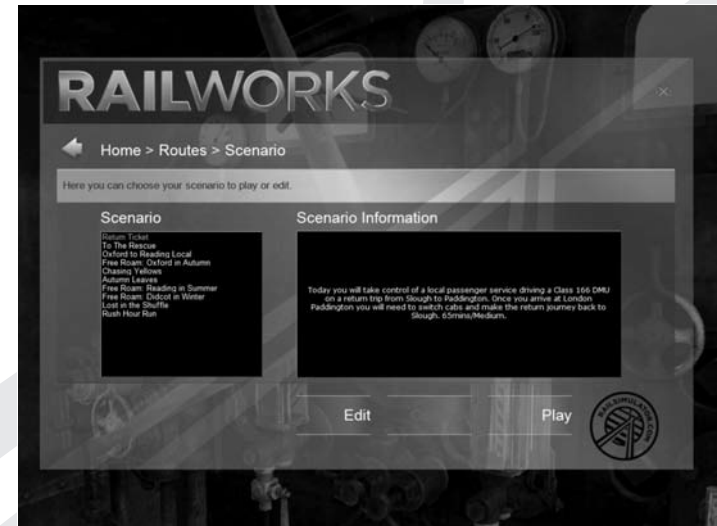
Route selection is via a list in the centre of the Routes Screen. When you select a Route, a description of that route appears in the window to the right of the selection pane.

The three options on this screen are:

- Free Play** Select for Free Roam Driving
- Scenario** Select to go to the Scenarios screen
- New Route** Select to create a new route. See the Creator Manual supplied with your game for more information on this option

3.3 Scenario Screen

The Scenario Screen allows you to choose a Scenario to run, continue a Saved Scenario or Create a Scenario of your own.



Select a Scenario from the list in the centre of the Scenario Screen. When you select a Scenario, a description of that Scenario appears in the window to the right of the selection pane.

The three options on this screen are:

- Edit** Choose this to create a new Scenario and alter an existing Scenario. See the Creator Manual supplied with your game for more information on this option.
- Continue** Choose this to continue with a previously saved Scenario. This option is available only if you have previously saved a Scenario.
- Play** Choose this to begin your chosen Scenario.

3.4 Introduction to commands while driving

Full details of all of the commands available are listed in the Keyboard Controls Guide and in the Driver Manual.



3.4.1 Driver's Guide

The driver's guide is toggled on and off using the <F3> key and has four modes.

The first mode displays a small version of the 2D map based around your train as well as the current speed limits. The second mode shows the distance to your destination as well as a wait time bar, the third shows the gradient graphically and the final mode shows the coupling state of your train. In this mode you can decouple rolling stock by left clicking the coupling icon located between the stock items.

3.4.2 Display Names

As you drive your train, names of trains and locations appear in the game in bubbles.

These are valuable for identifying locations used in the Scenario but can be turned off by pressing the <F6> key.

3.4.3 Speed Overlays

Pressing the <F4> key will bring up a display over at the bottom of your screen showing your speed, direction of travel and regulator/brake states.

For more detailed information press the <F5> key to cycle through an overlay which appears in the top right of the screen. Pressing the <F5> key once brings up the top half of the information. Pressing it twice adds the bottom half of the information. Pressing it three times clears the display.

3.4.4 2D Map

The 2D map can be accessed by pressing the <9> key or via the map icon on the Main menu.

Navigate around the map by holding down the right mouse button and moving the mouse. Alternatively you can use the left mouse button to drag and draw an area which will be zoomed into. The mouse wheel can be used to zoom in and out. A single right click or pressing the <9> key again will close the 2D map.

In the bottom right are two icons. The red icon centres the map on the player locomotive. The monitor icon brings up a list of display filters for turning off items in the 2D map.

04

Free Roam Driving

Free Roam Driving, or Free Play mode, allows you to select a train and drive anywhere along your chosen route.

In this mode, there is no goal, and no required objectives (such as meeting a timetable or picking up passengers). There are no AI Trains (other trains run by the software with which you can interact) on the route in this mode.

There are two ways to enter Free Play mode:

- Click on the **Free Play** link on the Routes screen.
- Select **Free Roam Scenario** from the list of Scenarios on the Scenarios screen.

Upon entering Free Play mode, you are placed in a central location along your chosen route. Your camera is initially set to an external view, and is detached from any train. The point of view is above the available trains.

As there is no goal in Free Play mode, you can exit at any time by selecting the **Quit** icon in the Main menu (visible when you place your mouse at the bottom of your screen), or pressing <Ctrl-Q> on the keyboard.



05

Running a Scenario

Running a scenario offers a more specific way to drive a train.

A Scenario is a specific assignment, with a goal to achieve by accomplishing various objectives along the way. A Scenario could include stopping to pick up passengers, deliver freight, or meeting a particular timetable. Scenarios are usually timed, and your success at completing a Scenario is measured against achieving the required objectives and completing within the time allowed. You can practise Scenarios to improve your skills, and stop and save a Scenario to complete at a later time.

You can run a scenario at any driving level. Keep the controls at 'Simple' to start out with, letting the software do most of the driving.

To run a scenario:

1. Load the RailWorks by clicking on the desktop icon.
2. Click on the **Play Game...** button.
3. Click on the **Routes** link on the Home screen.
4. Select a route from the list of Routes in the centre of the Routes screen.
5. Click on the **Scenario** link at the bottom of the Routes screen. You will then see the Scenario screen.
6. Select a Scenario from the list in the centre of the screen.
7. Click on the **Play** link at the bottom of the screen and wait for the route to load.

Once you have entered the Scenario, you will see your train waiting, and the Assignment Assistant window will be open.



This window has three icons at the top. The first gives the description of the Scenario and provides details such as the date, time and season as well a bullet pointed summary of the steps needed to complete the scenario.

The middle icon provides a more detailed list of the assignments needed to complete the scenario along with expected arrival and departure times. The completion state of each stage is also shown by a red cross or a green check mark depending on whether it has been completed or not.

The final icon brings up a list of keyboard controls for RailWorks.

Press the **<F1>** key to toggle the Assignment Assistant on and off. Alternatively, you can bring up the Main menu from the bottom of the screen and click on the Assignment Assistant icon.



5.1 Saving Your Scenario

If you want to save your existing scenario and restart it later, press the <F2> key and click the Save option in the Save dialog. Each time you save a scenario it overwrites the previously saved version.

Then exit by clicking on the **Quit** icon in the Main menu, or by clicking <Ctrl-Q>.

5.2 Resuming Your Scenario

To resume your Scenario:

1. Click **Play Again** from the Summary screen, which returns you to the Routes screen.
2. Select your Scenario from the Scenario screen.
3. Click on the **Continue** link at the bottom of the Scenario screen.

To exit without saving, simply click on the **Quit** icon in the Main menu, or press <Ctrl-Q>.

06

More Information, Support and Troubleshooting

If you are having trouble running this game, or want to find out more about RailWorks, first visit www.railsimulator.com where you can view the latest troubleshooting FAQs and send us your technical support queries online.

For Steam troubleshooting tips, please ensure you have followed instructions supplied by Steam at www.steampowered.com

6.1 Warning and Error Messages

RailWorks has three types of errors:

- Unrecoverable Errors. These errors cause a Free Play session or Scenario to terminate immediately.
- Major Operational Errors. These errors don't end a scenario or Free Play session because you can still drive the train. However, you will be penalised heavily in the performance report at the end of the Scenario.
- Minor Operational Errors. These errors don't end a Scenario or Free Play session because you can still drive the train

Full details of all of these errors are contained in the Driver Manual.

6.2 General Troubleshooting Tips

- If you have the disc version of this game and the AutoPlay screen does not automatically appear for installation/playing, right-click the disc drive icon found in My Computer and select *AutoPlay*.
- If the game is running slowly, try reducing the quality of some of the video and sound settings from the game's options menu. Reducing the screen resolution can often improve performance.



- For optimum performance when playing, you may like to disable other background tasks or your Antivirus applications running in Windows. However, ensure you restart your Antivirus applications after you have finished playing the game.

6.3 Problems Running the Game

Ensure you meet the minimum system requirements for this game and that you have the latest drivers for your video card and sound card installed:

- For NVIDIA video cards, visit www.nvidia.com to locate and download them.
- For ATI video cards, visit www.ati.amd.com to locate and download them.

If you are running the disc version of this game, try reinstalling DirectX from the disc. This is typically found in the DirectX folder on the root of the disc. If you have internet access, you can visit www.microsoft.com to download the latest version of DirectX.

This game also includes a Technical Support file to help you troubleshoot your problem. You can find the Technical Support file in the same folder as your game.

Warranty

Note: The following warranties only apply to products sold at retail. These warranties do not apply to products sold online via Steam for which separate warranties exist (see www.steampowered.com).

Limited Warranty

RailSimulator.com Limited warrants to the original purchaser of this computer software product that the recording media on which the software programs are recorded will be free from defects in materials and workmanship for 3 months from the date of purchase. During such period defective media will be replaced if the original product is returned to RailSimulator.com at the address below, together with a dated proof of purchase, a statement describing the defects, the faulty media and your return address. This warranty is in addition to, and does not affect your statutory rights in any way. This warranty does not apply to the software programs themselves, which are provided "as is", nor does it apply to media which has been subject to misuse, damage or excessive wear.

Returns After Warranty

RailSimulator.com will replace user-damaged media, current stocks allowing, if the original media is returned with a cheque or postal order for £7.50 per disc, payable to RailSimulator.com Ltd. Please remember to include full details of the defect, your name, address and where possible, a daytime telephone number where we can contact you.

RailWorks Warranties, RailSimulator.com Limited, Compton House, Walnut Tree Close, Guildford GU1 4TX.

RailSimulator.com excludes any warranty in relation to the Product if it is bought second hand and the consumer is not the first end user of the Product.



07

Credits

© 2009 RailSimulator.com Limited. All rights reserved. Portions originally developed by Kuju Entertainment Limited in association with F4G Software plc. Portions copyright Kuju Entertainment Limited 2007. Physics engine provided by Ageia Technologies Inc. The Rail Simulator Logo is a registered trademark. The RailWorks logo is a trademark of RailSimulator.com Limited. DB and the DB logo are trademarks of Deutsche Bahn AG. First and the First Logo are trademarks of the First Group plc. The Creative logo is a trademark of Creative Labs Inc. The Union Pacific shield is a registered trademark, used under license. All other trademarks are the property of their respective owners.

